

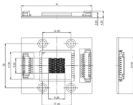
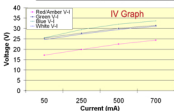


Enfis UNO Plus Light Engine Hi-CRI

Technical Specification

Electro-Optical Characteristics

Channel Item	Red/Amber			Green			Blue			White		
	Min	Typ	Max	Min	Typ	Max	Min	Typ	Max	Min	Typ	Max
Rated Current I_f (mA)		550			420			420			400	
Forward Voltage V_f (Volts)		22.7			29.9			29.8			31.2	
Peak Wavelength λ_p (nm)	620	630	640	510	520	530	455	465	475	-	-	-
Dominant Wavelength λ_d (nm)	610	620	630	518	528	538	460	470	480	-	-	-
Spectral Width $\Delta\lambda$ (nm)	12	18	22	28	36	42	19	23	27	-	-	-
Colour Temperature CCT (K)	-	-	-	-	-	-	-	-	-	4000	4250	4500
Total Radiant Flux Φ_e (mW)		1000			660			1800			1150	
Radiant Flux Density $\Phi_{e,DA}$ (mW/cm ²)		870			574			1565			1323	
Total Luminous Flux Φ_v (Lumen)		240			290			100			350	
Luminous Flux Density $\Phi_{v,DA}$ (Lumen/cm ²)		209			252			87			304	
Total Electrical Power P (W)		12.5			12.5			12.5			12.5	



LED Driver PCB

Efficient LED driver based on switch mode technology
 Temperature monitoring and control
 USB/Serial PC Interface

Connectivity

TTL interface with USB converter (USB connector head provided)

Thermal Management

Composite metal heatsink with integrated low noise DC fan
 Low thermal resistance <2°C/W
 Compact size and low weight

Handling LED Array

Contact with the encapsulant on the surface of the LED array must be avoided to prevent damage. Do not apply pressure to the encapsulant or allow it to come into contact with the sharp objects. During operation the encapsulant will be hot and contact should be avoided.

Static Electricity

Care must be taken when handling, these products are sensitive to static electricity. Observe static handling precautions.



Cleaning

Avoid touching the LED array surface.
 To clean - BLOW surface with either dry air or nitrogen gas.

Eye Safety Precautions

The light output of the products may cause injuries to human eyes in circumstances where the products are viewed directly with unshielded eyes for more than a few seconds.



Please refer to IEC 60825-1:2001 for further information.

ENFIS LIMITED
 TECHNIUM 2, KING'S ROAD
 SWANSEA WATERFRONT
 SWANSEA SA1 8PJ UK

TEL +44 (0)1792 486680
 FAX +44 (0)1792 485537
 WWW.ENFIS.COM

ENFIS

UNOPLUS Hi-CRI Light Engine Rev. 3, May, '08



Enfis UNO Plus Light Engine Hi-CRI

Hi CRI spot-source colour/CCT changing with 36 high-power LEDs in just 1cm²

Features & Benefits

• Two Formats

- Plug & Play
 - Just plug in and go straight from the box!
- Luminaire integration kit:
 - Array on connectorized PCB with mounting holes
 - Separate housed driver module

• Superior colour mixing with dense packaging and interleaving of colours

• 4.3 Billion colours

- Rich colours and wide dynamic range via RGBA mixing, 4 x256 step dimming
- CRI >90

• Small size

- Ideal for moving spot lights
- Ideal for colour/ECT - changeable drop in replacement spot source

• Full colour/colour temperature control and monitoring

• 50W: High-power 'useable' light from a 1cm² array

- DMX512 compatible
- Smart thermal protection system
- Optional life-long 100% Lumen maintenance
- System 3-year warranty

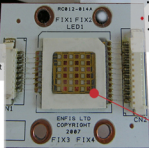
Applications & Markets

- Entertainment lighting
 - Club/bar lighting
 - Theatre spot gel replacement
 - Moving spots
- Architectural lighting
 - Exterior buried spotlights
 - Exterior floodlights
 - Exterior/interior wall-washing
 - Interior colour/CCT-variable lighting
- Retail lighting
 - Colour/CCT-variable spotlights
 - Display lighting
- Fibre optic lighting
 - Colour/CCT-changing illuminator light sources

Outline Specification

Wavelength		Typical Light Output (Lumens)
630nm		360
520nm		335
465nm		130
595nm		270

Input 48V DC < 2A



The 1cm x 1cm Array:
36 high-power LEDs
mixing R/AGBW

ENFIS LIMITED
TECHNOLM 2, KING'S ROAD
SWANSEA WATERFRONT
SWANSEA SA1 8PJ UK

TEL +44 (0)1792 485960
FAX +44 (0)1792 485637
WWW.ENFIS.COM


ENFIS

UNO PLUS LE HI-CRI Rev. 2 May 08